

Optical Fibre Distribution Enclosures



Fibre Optic Systems offers a range of optical fibre distribution enclosures. These enclosures are widely used as a termination point for main feeder cables to connect to secondary drop cables. Fibre splicing, splitting & distribution can be achieved in these enclosures. They provide solid protection and management of cable drops in your optical network and can be used indoors or outdoors.

Applications

- Fibre to the subscriber networks
- Splicing and patching of feeder cables to drop cables
- Indoor and outdoor installation
- PLC splitters for GPON installs

Features & Benefits

- Perfectly suited for outside of building, or building riser installs with its compact and sealed design
- Made of hard wearing and lightweight PC-ABS, splash-proof, water-proof, dust-proof, long-lasting, with a protection rating of IP55
- Simple cable retention available for both incoming feeder cables and multiple drop cables
- Facilitates fibre splicing, cable retention, storage & distribution with its innovative double layered construction
- Separate internal routing paths for cable, pigtails, patch cords
- Each enclosure is supplied with wall mounting accessories and management consumables
- Suitable for point-to-point and point-to-multipoint FTTx installs with both splicing and splitting capability



Key Features



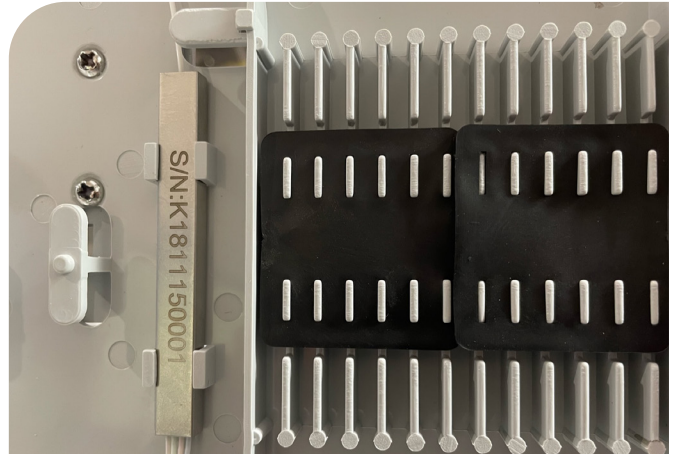
Excellent cable management utilising the double sided cassette ensure network maintenance, adds, moves and changes are simple to perform



Cable jacket and cable strength member retention are available on every enclosure ensuring compatibility with both indoor and outdoor cables



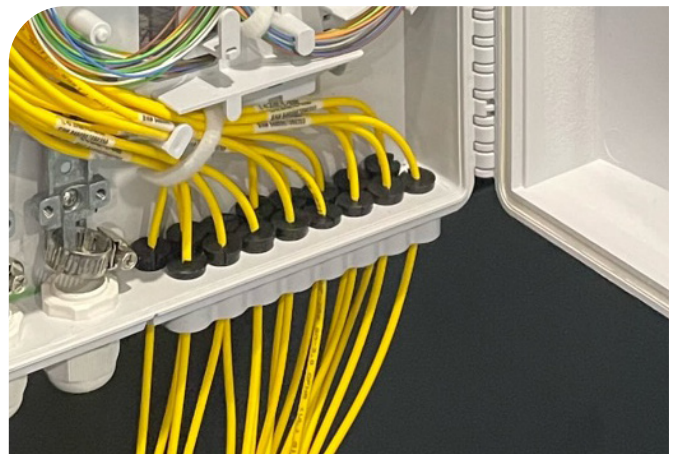
Fully sealed enclosures with an IP55 rating suitable for installation externally, internally and in building risers



Each enclosure is equipped with allowances for splitters and/or splicing; suitable for both point-to-point and point-to-multipoint FTTx networks



Secure and easy to use latching system provides proper sealing and easy handling in the field (1U & 2U shown)



Individual ports for FTTx installations allow for drop cables to be commissioned only as required

Technical Specifications

Environmental Properties (Common)

Operating temperature (°C)	-40 ~ +60
Relative humidity (%)	5 ~ 90
Ingress protection	IP55

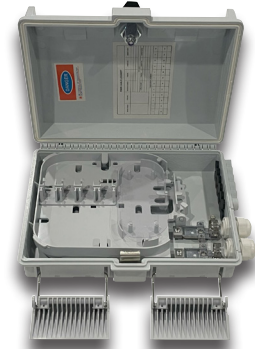
Physical Properties

	0U Enclosure	1U Enclosure
Part Number	DB-0UL	DB-1UL
Dimensions WxHxD (mm)	135 x 205 x 43	210 x 270 x 95
Cable Entries/Exits	1/6	2/12
Adapter Capacity	6 SC / LCD	8 SC / LCD
Nominal Weight (kg)	0.4	1.44
Max Diameter of Entry Cable (mm)	9	9
Max Diameter of Drop Cable (mm)	3mm Figure 8	3
Suitable PLC configurations	1:2, 1:4	1:4, 1:8

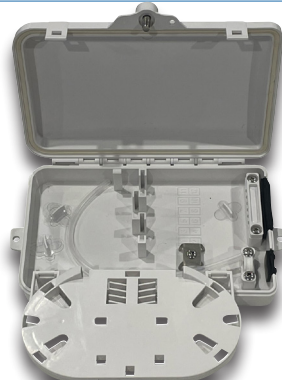
Appearance



Internal Appearance (cassette closed)



Internal Appearance (cassette open)

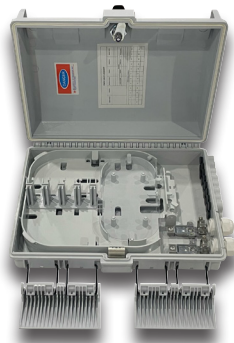


Technical Specifications

	2U Enclosure	3U Enclosure
Part Number	DB2-UL	DB3-UL
Dimensions WxHxD (mm)	235 x 310 x 110	300 x 420 x 115
Cable Entries/Exits	2/16	2/32
Adapter Capacity	16 SC / LCD	32 SC / LCD
Weight (kg)	1.57	2.25
Max Diameter of Entry Cable (mm)	9	25
Max Diameter of Drop Cable (mm)	3	3
Available PLC configurations	1:16	1:32
Appearance		



Internal Appearance (cassette closed)



Internal Appearance (cassette open)

