

Rittal – The System.

Faster – better – everywhere.

Energy-box, 482.6 mm (19") Pull-out – DK 7480.300

Date : Aug 12, 2016

ENCLOSURES

POWER DISTRIBUTION

CLIMATE CONTROL

IT INFRASTRUCTURE

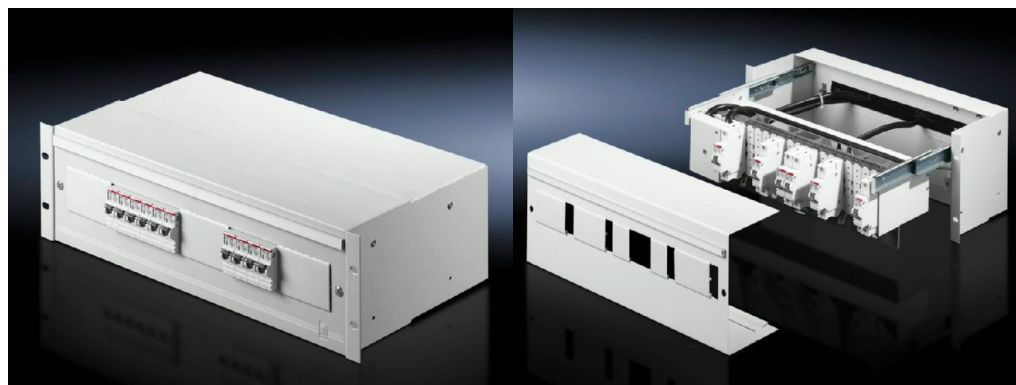
SOFTWARE & SERVICES

FRIEDHELM LOH GROUP



Energy-box, 482.6 mm (19") Pull-out – DK 7480.300

created: 12.08.2016 on www.rittal.com/com-en



Product description

Description: - Depth-variable top hat rail for snap-in attachment of installed equipment to DIN 43 880 in sizes 1 – 3 (e.g. to accommodate flush-type socket outlets, circuit-breakers, etc. or entire installed assemblies)- Cable clamping at the rear- Two power distribution rails with connection clamps on an insulated base/plinth- Plastic cover including extension cover- Maximum capacity = 22 HP (22 x 18 mm = 396 mm)- Enclosure height: 3 U - Enclosure depth: 223 mm - Maximum extension : 220 mm- Connection clamps : 4 clamps 35 mm², 18 clamps 16 mm² (per rail)

Colour: RAL 7035

Supply includes: Energy-Box with plastic blanking covers.
Connection clamp
Identification strips
Strain relief
Brush strip

Packs of: 1 pc(s).

EAN: 4028177247529

Customs tariff number: 94032080

eCl@ss 5.1: 27143401

eCl@ss 7.0: 27142604

ETIM 6.0: EC000330

Product features

Dimensions:	Width: 482,6 mm / 19" Depth: 220 mm
Units:	3 U
Max. pitch units @ 18 mm:	22
Weight/pack:	6.28 kg
Downloads	
CAD drawings:	Request