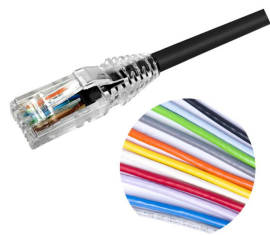


# NPC6AUZDB

Base Product



## NETCONNECT® Cat 6A U/UTP RJ45 Patch Cord, LSZH

- High-performance patch cords exceeding industry standards supporting NETCONNECT channel specifications
- Standardized transparent, slim-line boots provides consistent patch cord appearance and supports highest density applications
- Colored clips are available to fit the transparent boot, eliminating the need of multiple colors for matching every jacket color
- Colored pull latch tabs are available for easier plug release handling from the modular jack

### Product Classification

|                       |   |
|-----------------------|---|
| Regional Availability | Asia   Australia/New Zealand   EMEA   Latin America   |
| Portfolio             | NETCONNECT®   |
| Product Type          | Twisted pair patch cord   |
| Product Series        | NPC   |
| Ordering Note         | Cords < 1 m are valid elements for use in a channel or as an equipment interconnect but due to their limited length are not guaranteed to meet component compliance requirements that were developed to assess the quality of longer cords   Cords > 1 m are authorized for use in channels and are an effective standalone method used to connect active devices |

### General Specifications

|                                |   |
|--------------------------------|---|
| ANSI/TIA Category              | 6A  |
| Cable Type                     | U/UTP (unshielded)  |
| Conductor Type                 | Solid   |
| Interface, Connector A         | RJ45 plug   |
| Interface Feature, connector A | Standard  |
| Interface, Connector B         | RJ45 plug   |
| Interface Feature, connector B | Standard  |
| Jacket Color                   | Black   Blue   Green   Orange   Red   Slate   White   Yellow    |
| Pairs, quantity                | 4   |
| Transmission Standards         | ANSI/TIA-568.2-D   IEEE 802.3bt Type 4   ISO/IEC 11801 Class EA |
| Wiring                         | T568B   |

### Dimensions

# NPC6AUZDB

|                                   |                    |
|-----------------------------------|--------------------|
| Cable Assembly Length Range (m)   | 1 – 30             |
| Cable Assembly Length Range (ft)  | 1 – 100            |
| Cable Assembly Length Range (cm)  | 15 – 999           |
| Cable Assembly Length Range (in)  | 6 – 999            |
| Diameter Over Jacket              | 7.24 mm   0.285 in |
| Compatible Conductor Gauge, solid | 24 AWG             |

## Ordering Tree

NPC

-

10

OR

12

0

5

0

11

M

Jacket Color

10

|    |        |
|----|--------|
| BK | Black  |
| BL | Blue   |
| GN | Green  |
| GY | Gray   |
| OR | Orange |
| PK | Pink   |
| RD | Red    |
| WT | White  |
| YL | Yellow |

UOM

11

|   |            |
|---|------------|
| F | Foot       |
| M | Meter      |
| N | Inch       |
| C | Centimeter |

Length

12

XXX

Notes

- Cords > 1m are authorized for use in channels and are an effective standalone method used to connect active devices
- Cords < 1m are also valid elements for use in a channel or as an equipment interconnect but due to their limited length are not guaranteed to meet component compliance requirements that were developed to assess the quality of longer cords

## Material Specifications

|                          |   |
|--------------------------|---|
| Conductor Material       | Bare copper   |
| Contact Plating Material | Gold over nickel                                      |
| Material Type            | Phosphor bronze contacts   Polycarbonate plug housing |

## Mechanical Specifications

|                              |                                  |
|------------------------------|----------------------------------|
| Minimum Bend Radius Note     | 4 times the outer cable diameter |
| Plug Insertion Life, minimum | 750 times                        |

## Environmental Specifications

|                       |                                     |
|-----------------------|-------------------------------------|
| Operating Temperature | -20 °C to +60 °C (-4 °F to +140 °F) |
| Relative Humidity     | Up to 93%, non-condensing           |
| Acid Gas Test Method  | IEC 60754-2                         |
| Environmental Space   | Low Smoke Zero Halogen (LSZH)       |

# NPC6AUZDB

|                   |                  |
|-------------------|------------------|
| Flame Test Method | IEC 60332-3-22   |
| Safety Standard   | Anatel   UL 1863 |
| Smoke Test Method | IEC 61034-2      |

## Packaging and Weights

|                    |   |
|--------------------|---|
| Packaging quantity | 1 |
|--------------------|---|

## Regulatory Compliance/Certifications

| Agency        | Classification   |
|---------------|--|
| CHINA-ROHS    | Below maximum concentration value  |
| ISO 9001:2015 | Designed, manufactured and/or distributed under this quality management system   |
| RCM           | Compliant to electrical safety & telecommunications requirements   |
| REACH-SVHC    | Compliant as per SVHC revision on <a href="http://www.commscope.com/ProductCompliance">www.commscope.com/ProductCompliance</a> |
| ROHS          | Compliant  |
| UK-ROHS       | Compliant  |



## Included Products

|                                |   |
|--------------------------------|---|
| 2843018-3<br>MP-6AU-Boot-71-1  | – Integrated Boot and Pair Manager for MP-6AU, size 71, transparent             |
| 6-2843008-1<br>MP-6AU-Plug-B-1 | – Modular Plug, Category 6A/6, Unshielded, Cond Insulation OD - 0.79mm, 100 pcs |