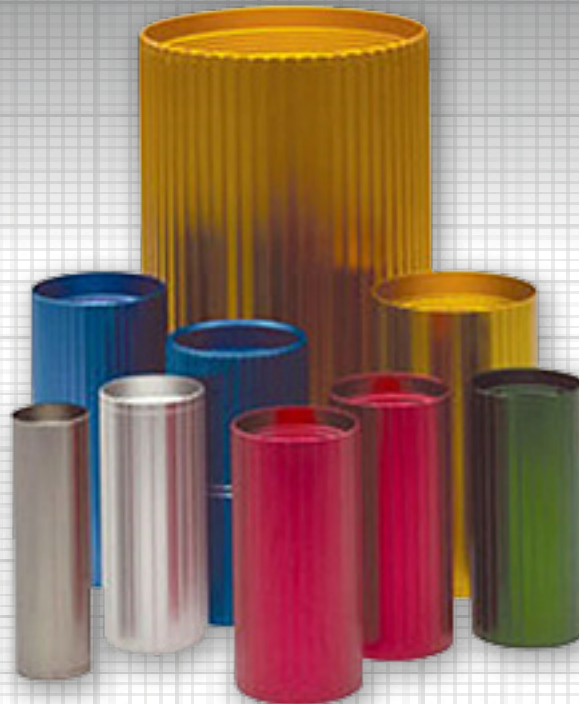


## KEY FEATURES

- Reverse-threaded or barbed
- Color-coded sizing
- Anodized Aluminum
- Easy to install
- Designed for all types of polyethylene ducts
- Air and water tight



**JackMoon**<sup>®</sup>

## The original color coded JackMoon Aluminum Duct Couplers for air and water tight connections

The original JackMoon<sup>®</sup> product that you have come to know and trust. JackMoon Aluminum Duct Couplers are available in two styles—reverse-threaded and barbed—offering different methods to join conduits together to get the perfect fit.

An anodized coating is color coded by size to protect the couplers and connectors, increasing their durability in the field. Designed for polyethylene ducts, these products feature a ribbed external surface that provides excellent non-slip gripping during installation. The reverse-threaded couplers are tapered to accommodate a wide range of sizes common in the telecom industry. Each coupler can be used with ducts of the same nominal size, eliminating the need to specify exact outside diameters. The buttressed threads create an excellent mechanical hold. These versatile couplings can be used in manholes, direct bury, aerial, or any application except where an air or water-tight connection is required.

The barbed couplers feature concentric air-tight barbs for maximum pullout resistance and are very effective under high-pressure airflow during cable propulsion. Please note, being a compression type fitting, the coupling must be pushed onto the innerduct under a compression load sufficient to cause the barbs to bite into the duct; requiring the use a hydraulic coupling press.

Visit [CalAm.net](https://calam.net)

<https://calam.net/electrical-broadband/aluminum-duct-couplers/>



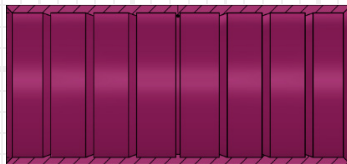
## SPECIFICATIONS

PRODUCT NUMBER	EACH SIZE (IN)	EACH SIZE (mm)	CASE QTY	COUPLER TYPE	COLOR
JM-COU-07CP108U	0.75"	20	25	REVERSED-THREADED	BLACK
JM-COU-10CP142U	1.00"	25	25	REVERSED-THREADED	ALUMINUM
JM-COU-11CP157U	1.125"	29	25	REVERSED-THREADED	GREEN
JM-COU-12CP166SB	1.25"	32	25	BARBED	BURGUNDY
JM-COU-12CP170U	1.25"	32	25	REVERSED-THREADED	BURGUNDY
JM-COU-15CP190SB	1.50"	40	25	BARBED	BLUE
JM-COU-15CP200U	1.50"	40	25	REVERSED-THREADED	NAVY BLUE
JM-COU-20CP252U	2.00"	50	25	REVERSED-THREADED	BRONZE

PRODUCT NUMBER	DUCT RANGE (IN)	DUCT RANGE (mm)
JM-COU-07CP108U	0.91"-1.08"	23.1-27.4
JM-COU-10CP142U	1.18"-1.42"	30.0-36.0
JM-COU-11CP157U	1.40"-1.57"	35.6-39.9
JM-COU-12CP166SB	1.66"	42.2
JM-COU-12CP170U	1.48"-1.70"	37.6-43.2
JM-COU-15CP190SB	1.9"	48.3
JM-COU-15CP200U	1.80"-2.00"	45.7-50.8
JM-COU-20CP252U	2.31"-2.51"	58.7-63.8

### INTERIOR VIEW OF:

BARBED



REVERSED-THREADED



For more technical information and/or to download the Tech Sheet for these products, please visit the Product Webpage: <https://calam.net/electrical-broadband/aluminum-duct-couplers/>

### ABOUT CAL AM MANUFACTURING

Cal Am Manufacturing® specializes in products for use in underground electrical and broadband applications. Founded in Southern California over 35 years ago, Cal Am designs and produces fittings and sealing devices to serve utilities, municipalities, government facilities, data centers, and fiber optic projects, through a worldwide network of distributors.

### TEST OUR PRODUCT

Learn more at: <https://calam.net/test-our-products>

Corporate Office:  
El Cajon, CA 92020

Phone +1.619.336.9550  
Fax +1.619.336.9549

[sales@calam.net](mailto:sales@calam.net)  
[marketing@calam.net](mailto:marketing@calam.net)  
[accounting@calam.net](mailto:accounting@calam.net)

[www.CalAm.net](http://www.CalAm.net)