



# MSTronic Co.,Ltd.

2F, 12, Gongshang Rd., Wugu Dist., New Taipei City, 248, Taiwan

TEL:886-2-2293-0159 FAX:886-2-2292-8851

E.MAIL: mse@mse.com.tw  
WEB: http://www.mse.com.tw

## MIT 77G-18BNNN

### Gigabit PoE Injector

#### 1. INPUT :

- 1.1 Input Voltage: 100Vac to 240Vac
- 1.2 Input Frequency: 47-63 hz
- 1.3 Input Current: 0.36A at 120Vac  
0.21A at 230Vac

#### 2. OUTPUT :

##### 2.1 Output Voltage & Current:

OUTPUT	18V
Max. load	1A
Power	18W
Min. Load	0A
Load reg. %	5%
Line reg. %	1%
Ripple %	1%
Noise %	1%

TOTAL POWER :18W

Note 1: Noise bandwidth is from DC to 20Mhz. Ripple & Noise is measured by Paralleling a 0.1Uf metalized capacitor on the test point.

#### 3. EFFICIENCY : 87% min at Full Load , 120Vac & 230Vac Input Voltage

#### 4. PROTECTION

##### 4.1 Short Circuit Protection

Output Short GND Terminal will not damage the Power Supply and will Auto-Reset.

##### 4.2 Input with Fuse Protection.

##### 4.3 High Pot: 4242Vdc, 60Sec, Input Terminal to output Terminal.

##### 4.4 Meet Level 6 (USA-VI )

#### 5. GENERAL DESCRIPTION

- 5.1 Operation Temperature: -25 - +50 Degree
- 5.2 Storage Temperature: -40 - +85 Degree
- 5.3 Operation Humidity: 5% - 90%
- 5.4 Cooling: Free air cooling
- 5.5 SIZE : 86\*78\*36 (L)\*(W)\*(H) unit: m/m



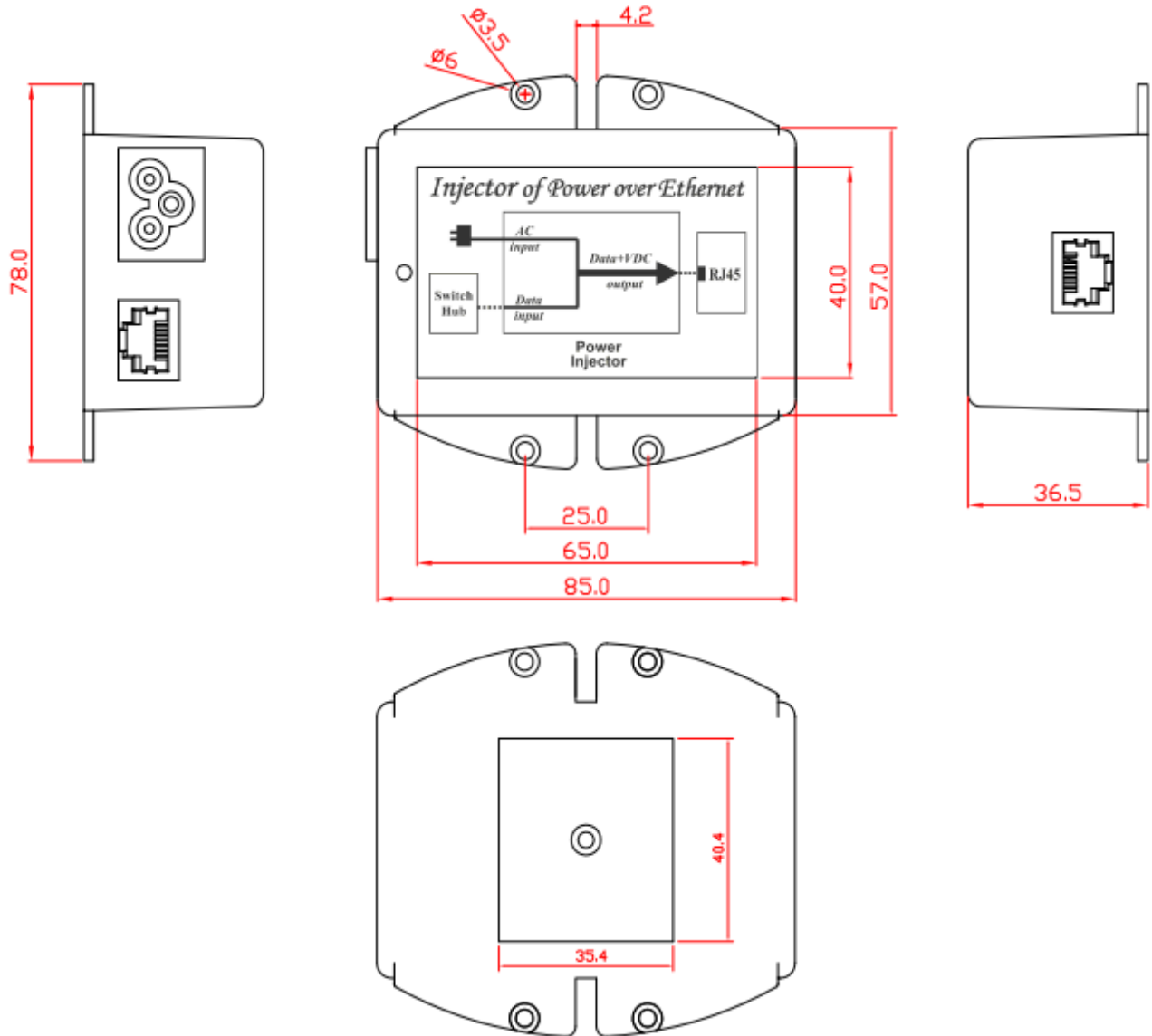
# MSTronic Co.,Ltd.

2F, 12, Gongshang Rd., Wugu Dist., New Taipei City, 248, Taiwan

TEL:886-2-2293-0159 FAX:886-2-2292-8851

E.MAIL: mse@mse.com.tw

WEB: <http://www.mse.com.tw>





# MSTronic Co.,Ltd.

2F, 12, Gongshang Rd., Wugu Dist., New Taipei City, 248, Taiwan

TEL:886-2-2293-0159 FAX:886-2-2292-8851

E.MAIL: mse@mse.com.tw

WEB: <http://www.mse.com.tw>

## 6. SPEC. of SURGE/LIGHTNING PROTECTION

	Signal
Operating Voltage	Data 5V
Clamping Voltage	Data 16.5V (@I PP =5A, t p =8/20μs, I/O pin to GND)
Peak Pulse Current	20A (tp=8/20μs)
Pin Protected	All 8 pin protected
Max. Shut Capacitance	<3pF (VR = 0V, f = 1MHz, I/O pin to GND) < 1.5 pF (VR = 0V, f = 1MHz, Between I/O pins)
IEC COMPATIBILITY (EN61000-4)	IEC61000-4-2 (ESD) ±15kV (air), ±8kV (contact) IEC61000-4-4 (EFT) 40A (5/50ns) IEC61000-4-5 (Lightning) 20A (8/20μs)



# MSTronic Co.,Ltd.

2F, 12, Gongshang Rd., Wugu Dist., New Taipei City, 248, Taiwan

TEL:886-2-2293-0159 FAX:886-2-2292-8851

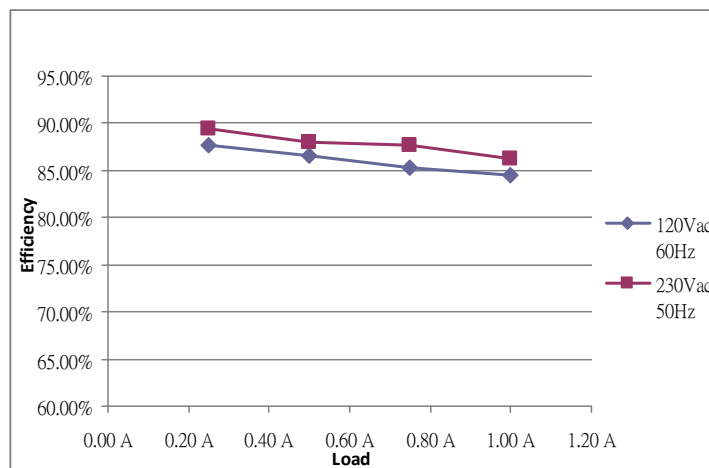
E.MAIL: mse@mse.com.tw

WEB: http://www.mse.com.tw

## 7. USA-VI

MODEL NAME: MIT-07G-18BNNN						
<b>Rated Vout</b>		<b>18 V</b>	<b>DoE Level VI (USA-VI 级)</b>			
<b>Rated Iout</b>		<b>1.00 A</b>	<b>Average</b>		<b>No-Load</b>	
<b>Rated Power</b>		18 W	≥ 85.00%		<100mW	
<b>Vin</b>	<b>Pin</b>	<b>Vout</b>	<b>Iout</b>	<b>Pout</b>	<b>Efficiency</b>	<b>Average</b>
120Vac 60Hz	5.30 W	18.60 V	0.25 A	4.65 W	87.74%	<b>86.01%</b>
	10.70 W	18.54 V	0.50 A	9.27 W	86.64%	
	16.10 W	18.30 V	0.75 A	13.73 W	85.25%	
	21.40 W	18.07 V	1.00 A	18.07 W	84.44%	
<b>No-Load</b>	89mW					

<b>Vin</b>	<b>Pin</b>	<b>Vout</b>	<b>Iout</b>	<b>Pout</b>	<b>Efficiency</b>	<b>Average</b>
230Vac 50Hz	5.20 W	18.60 V	0.25 A	4.65 W	89.42%	<b>87.87%</b>
	10.50 W	18.49 V	0.50 A	9.25 W	88.05%	
	15.70 W	18.37 V	0.75 A	13.78 W	87.75%	
	21.10 W	18.20 V	1.00 A	18.20 W	86.26%	
<b>No-Load</b>	158mW					





# MSTronic Co.,Ltd.

2F, 12, Gongshang Rd., Wugu Dist., New Taipei City, 248, Taiwan

TEL:886-2-2293-0159 FAX:886-2-2292-8851

E.MAIL: mse@mse.com.tw

WEB: http://www.mse.com.tw

## 8. Indicator :

8.1 LED (GREEN) indicates PWR – OK

## 9 CONNECTION :

RJ-45 Input (Data Only)			RJ-45 Output (Data & Power)	
Pin	Symbol	Description	Symbol	Description
1	BI_DA+	Data Pair A+	BI_DA+	Data Pair A+
2	BI_DA-	Data Pair A-	BI_DA-	Data Pair A-
3	BI_DB+	Data Pair B+	BI_DB+	Data Pair B+
4	BI_DC+	Data Pair C+	+Vdc + BI_DC+	power(+)+Data Pair C+
5	BI_DC-	Data Pair C-	+Vdc + BI_DC-	power(+)+Data Pair C-
6	BI_DB-	Data Pair B-	BI_DB-	Data Pair B-
7	BI_DD+	Data Pair D+	-Vdc + BI_DD+	power(-)+Data Pair D+
8	BI_DD-	Data Pair D-	-Vdc + BI_DD-	power(-)+Data Pair D-

Note : the model is isolated design, the output +/- or input +/- can be shorted to ground (FG).

## Application of POE ( Power over Ethernet )

