

OSA supplies a large range of reliable and high quality fibre optic connectors. Connectors offer the simplest way of adding connect and disconnect capability to a fibre optic network and offer an excellent temporary or long-term alternative to fusion splicing.

Available in a range of common, legacy and specialty variants and to suit a range of fibre modes and cable styles. OSA connectors provide a reliable, high performance link between fibre cables in your network.

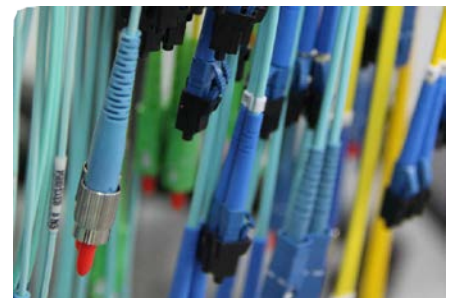


KEY FEATURES

- Multiple connector styles & colours to suit a range of cable constructions
- A range of standard and custom boot colours to suit network or circuit identification
- Precision zirconia ceramic ferrules offer low insertion loss and excellent return loss
- Connectors comply with relevant IEC & TIA standards for ensured performance and quality
- RoHS & REACH SvHC compliant

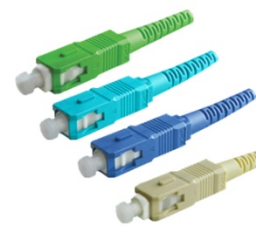
Application

- Ethernet, fibre channel, ATM and WAN
- Telecommunications networks
- Local area networks
- Data processing networks
- Cable television



Technical Specifications

SC Connector	Performance			Conformance
	MM	SM	APC	
Insertion Loss Typ/Max (dB)	0.1 / 0.25	0.08 / 0.2	0.08 / 0.2	IEC 61300-3-34
Return Loss Typ/Min (dB)	N/A	55 / 50	70 / 65	IEC 61300-3-6
Mating Durability (cycles)	500 <0.2db change			IEC 61300-2-2
Intermateability	Compliant			IEC 61754-4
Operating Temperature (°C)	-25 to +70 (12 Cycles, <0.2db)			IEC 61300-2-22
LC Connector	Performance			Conformance
	MM	SM	APC	
Insertion Loss Typ/Max (dB)	0.1 / 0.25	0.08 / 0.2	0.08 / 0.2	IEC 61300-3-34
Return Loss Typ/Min (dB)	N/A	55 / 50	70 / 65	IEC 61300-3-6
Mating Durability (cycles)	500 <0.2db change			IEC 61300-2-2
Intermateability	Compliant			IEC 61754-20
Operating Temperature (°C)	-25 to +70 (12 Cycles, <0.2db)			IEC 61300-2-22
ST Connector	Performance		Conformance	
	MM	SM		
Insertion Loss Typ/Max (dB)	0.15 / 0.30	0.15 / 0.30	IEC 61300-3-34	
Return Loss Typ/Min (dB)	N/A	55 / 50	IEC 61300-3-6	
Mating Durability (cycles)	500 <0.2db change		IEC 61300-2-2	
Intermateability	Compliant		IEC 61754-2	
Operating Temperature (°C)	-25 to +70 (12 Cycles, <0.2db)		IEC 61300-2-22	



FC Connector	Performance			Conformance
	MM	SM	APC	
Insertion Loss Typ/Max (dB)	0.1 / 0.25	0.08 / 0.2	0.08 / 0.2	IEC 61300-3-34
Return Loss Typ/Min (dB)	N/A	55 / 50	70 / 65	IEC 61300-3-6
Mating Durability (cycles)	500 <0.2db change			IEC 61300-2-2
Intermateability	Compliant			IEC 61754-13
Operating Temperature (°C)	-25 to +70 (12 Cycles, <0.2db)			IEC 61300-2-22



NSW - Silverwater

Unit 4, 52 Holker Street
Silverwater NSW 2128

E: sales@opticalsolutions.com.au

P: +61 2 9395 1400

F: +61 2 9647 0014

NSW - Sydney City

Unit 10, 10 Bradford Street
Alexandria NSW 2015

E: sydcity@opticalsolutions.com.au

P: +61 2 9304 4555

F: +61 2 9700 8055

VIC

Unit 3 / 1 Rocklea Drive
Port Melbourne VIC 3207

E: vicsales@opticalsolutions.com.au

P: +61 3 9646 4166

F: +61 3 9646 4155

QLD

Unit 2/ 40 Borthwick Ave
Murarrie QLD 4172

E: qldsales@opticalsolutions.com.au

P: +61 7 3399 5280

F: +61 7 3399 9805

ACT

22 Isa Street
Fyshwick ACT 2609

E: actsales@opticalsolutions.com.au

P: +61 2 6162 4600

F: +61 2 6162 4605

WA

28a Teddington Rd
Burswood WA 6100

E: wasesales@opticalsolutions.com.au

P: +61 8 9361 7000

F: +61 8 9361 7011