

OSA Hybrid Multi Application, or HMA, connector series is a small hybrid connector with an innovative design ensuring its ability for deployment in the toughest environments where high performance and total reliability are critical.

Benefiting from Stratos expanded beam technology, with a long and proven industry track record, the precision optical alignment system creates immunity from water, mud, dust oil and other contaminants.

The HMA Hermaphroditic coupling eliminates the need for adaptors and male and female mating halves.

Hermaphroditic housings allow for rapid deployment, creating low loss Single mode, Multimode and Hybrid daisy chained links in a variety of plan forms ranging from simplex fiber to a copper Hybrid. The HMA is ideally suited for environmental extremities where low maintenance is necessary



## KEY FEATURES

- Advanced expanded technology
- Hermaphroditic interconnection
- 1 to 4 fibre channels single mode or multi mode
- Hybrid electrical & fibre channel options available
- Rugged housing and construction
- Keyed boot for 'Blind Mating'
- Industry leading expanded beam optical performance
- No adapters necessary
- Inexpensive, low downtime field cleaning requiring no special tools
- Designed to meet requirements of MIL83526/MIL20/MIL21

## Applications

- Broadcast
- Military communications
- Industrial, mining and petrochemical

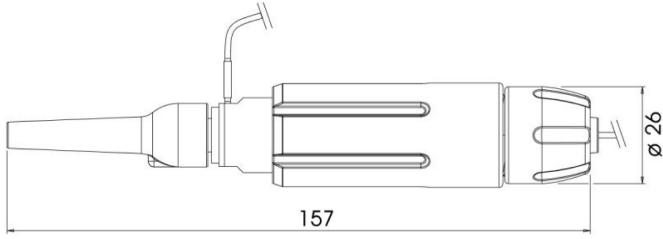
## Technical Specifications

<b>Insertion loss</b>	50/125 @ 850/1300nm 0.8 dB typ 9/125 @ 1310/1550nm 1.0 dB typ
<b>Return loss</b>	9/125 @ 1310/1550nm >45dB (typical 48dB)
<b>Operating temperature</b>	-40 to +70°C
<b>Storage temperature</b>	-55 to +85°C
<b>Water immersion</b>	up to 2M depth
<b>Vibration sinusoidal</b>	10-500Hz, 0.75 amplitude @ 10g acceleration
<b>Free fall resistance</b>	500 falls onto concrete from 1.2M height
<b>Bump resistance</b>	4000 bumps @ 40g acceleration
<b>Tensile strength</b>	Tensile of 1500N, cable dependent

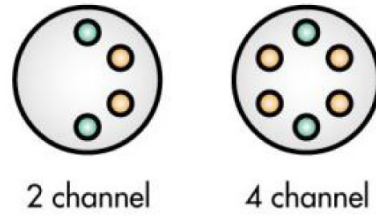
<b>Cable variations</b>	Compatible with tactical cable: Plug < 6mm o/d Bulkhead < 3mm o/d Other cable sizes available on request
<b>Environmental protection</b>	Rugged extruded rubber shell and included dust cap

### Connector Geometry & End Face Arrangement

**Junior EB Plug**



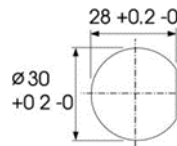
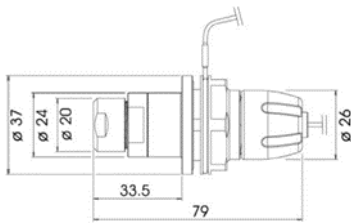
**Channel Arrangement**



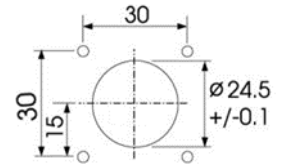
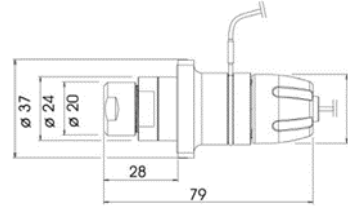
2 channel

4 channel

**Junior EB Jam Nut Bulkhead**



**Junior EB Flange Mount Bulkhead**



Note: All dimensions are in mm

**NSW - Silverwater**

Unit 4, 52 Holker Street  
Silverwater NSW 2128  
E: [sales@opticalsolutions.com.au](mailto:sales@opticalsolutions.com.au)  
P: +61 2 9395 1400  
F: +61 2 9647 0014

**NSW - Sydney City**

Unit 10, 10 Bradford Street  
Alexandria NSW 2015  
E: [sydcity@opticalsolutions.com.au](mailto:sydcity@opticalsolutions.com.au)  
P: +61 2 9304 4555  
F: +61 2 9700 8055

**VIC**

Unit 3 / 1 Rocklea Drive  
Port Melbourne VIC 3207  
E: [vic-sales@opticalsolutions.com.au](mailto:vic-sales@opticalsolutions.com.au)  
P: +61 3 9646 4166  
F: +61 3 9646 4155

**QLD**

Unit 2/ 40 Borthwick Ave  
Murarrie QLD 4172  
E: [qld-sales@opticalsolutions.com.au](mailto:qld-sales@opticalsolutions.com.au)  
P: +61 7 3399 5280  
F: +61 7 3399 9805

**ACT**

22 Isa Street  
Fyshwick ACT 2609  
E: [act-sales@opticalsolutions.com.au](mailto:act-sales@opticalsolutions.com.au)  
P: +61 2 6162 4600  
F: +61 2 6162 4605

**WA**

28a Teddington Rd  
Burswood WA 6100  
E: [wasales@opticalsolutions.com.au](mailto:wasales@opticalsolutions.com.au)  
P: +61 8 9361 7000  
F: +61 8 9361 7011