

CoreLink EHD Cassette Loaded Passive Components



The CoreLink EHD Enhanced High Density optical fibre system is expanded with a range of cassette loaded passive components. Utilising the same existing range of CoreLink EHD enclosures, these cassette loaded passive components integrate seamlessly into any optical fibre network.



The optical passive components included in the EHD range are:

- Splitters
- Circulators
- WDMs
- Circulated WDMs

KEY FEATURES

- Clear port labelling helps to ensure patching is completed correctly
- Integrates into existing installations utilising CoreLink EHD enclosures and MTP cassettes
- Efficient scaling of components as required limits upfront capital expenditure
- Compact & rugged housing allows for easy handling and offers excellent protection of components
- Allows for the duplication of existing fibre networks with passive components – eliminates the need for added costly fibre runs
- Add capacity to a fully subscribed fibre network where additional fibre runs are impractical or impossible

Applications

- FTTx optical networks
- GPON & GEAPON
- Splitting and monitoring fibre networks
- Network bandwidth duplication

Technical Specifications

Splitters

Fibre optic passive optical splitters offer a simple, convenient and compact method of splitting a fibre signal over two or more fibres.



Optical splitters work by allowing an optical signal travelling through a fibre to be divided between multiple output circuits utilising planar lightwave circuit technology. Optical splitters are a key component in many passive optical networks including FTTx installations.

Part Number	Description (Cassette Loaded Optical Splitters)
EHD-S1/1x4-SCA-13/15-S	1x 1:4 PLC Splitter, SCA, 1310 & 1550 nm, Singlemode, EHD Cassette
EHD-S1/2x4-SCA-13/15-S	1x 2:4 PLC Splitter, SCA, 1310 & 1550 nm, Singlemode, EHD Cassette
EHD-S2/1x2-SCA-13/15-S	2x 1:2 PLC Splitter, SCA, 1310 & 1550 nm, Singlemode, EHD Cassette
EHD-S2/1x4-SCALCA-13/15-S	2x 1:4 PLC Splitter, SCA/LCA, 1310 & 1550 nm, Singlemode, EHD Cassette
EHD-S1/1x8-SCALCA-13/15-S	1x 1:8 PLC Splitter, SCA/LCA, 1310 & 1550 nm, Singlemode, EHD Cassette

Circulators

Polarisation insensitive optical circulators offer a cost effective, simple, passive and reliable method of increasing fibre capacity utilising existing installed fibre.

Optical circulators work by allowing bi-directional traffic over a single fibre, effectively doubling your network capacity. Optical circulators connected at either end of the fibre link present transmit and receive signal ports. Being fully compatible with standard single wavelength SFPs, our circulators can be seamlessly integrated into existing fibre networks.



Part Number	Description (Cassette Loaded Optical Circulators)
EHD-C2-SCASC-13-S	2x Optical Circulators, SCA/SC, 1310 nm, Singlemode, EHD Cassette
EHD-C2-SCASC-15-S	2x Optical Circulators, SCA/SC, 1550 nm, Singlemode, EHD Cassette
EHD-C4-LCALC-13-S	4x Optical Circulators, LCA/LC, 1310 nm, Singlemode, EHD Cassette
EHD-C4-LCALC-15-S	4x Optical Circulators, LCA/LC, 1550 nm, Singlemode, EHD Cassette

Wavelength Division Multiplexers

Wavelength division multiplexers, or commonly referred to as WDMs, are a proven method of increasing effective bandwidth in optical fibre networks. Utilising wavelength sensitive filters to allow both 1310nm and 1550nm signals to travel over a single fibre, WDMs are cost effective, simple to use and easily implemented in new or existing optical fibre networks.

These cassette mounted wavelength division multiplexers are compatible with a wide range of multi wavelength SFPs.



Part Number	Description (Cassette Loaded Optical Splitters)
EHD-W2-SCASC-13/15-S	2x WDM, SCA/SC, 1310 & 1550 nm, Singlemode, EHD Cassette
EHD-W4-LCALC-13/15-S	4x WDM, LCA/LC, 1310 & 1550 nm, Singlemode, EHD Cassette

Circulated WDMs

Circulated WDMs offer an effective and innovative solution to increase effective bandwidth. Integrating both a 1310nm and a 1550nm circulator onto the filtered ports of a WDM, these units offer fully bi-directional traffic at both 1310 and 1550nm aggregated over a single fibre.



Where existing long distance fibre runs are at capacity or where leased fibre is utilised, these units offer cost effective quadrupling of effective bandwidth.







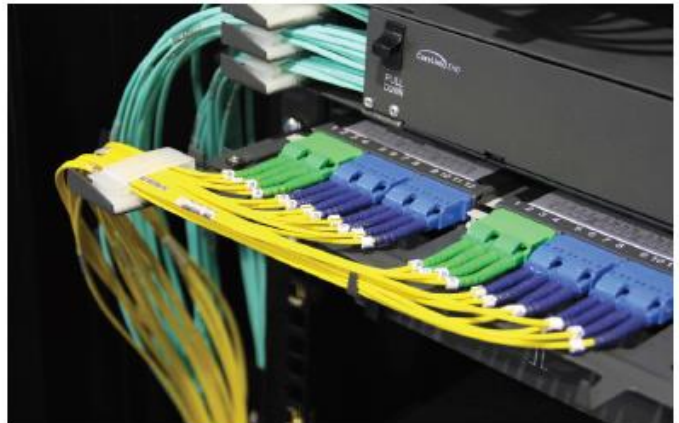
Part Number	Description (Cassette Loaded Optical Splitters)
EHD-CW1-SCASC-13/15-S	1x Circulated WDM, SCA/SC, 1310 & 1550 nm, Singlemode, EHD Cassette
EHD-CW2-SCASC-13/15-S	2x Circulated WDM, SCA/LC, 1310 & 1550 nm, Singlemode, EHD Cassette

CoreLink EHD Enclosures and MTP Cassettes

Part Number	OSA-1RU-EHD- S	OSA-1RU-EHD- S8
Description	CoreLink EHD 1RU 12 Port Sliding Enclosure - 144f Capacity	CoreLink EHD 1RU 8 Port Sliding Enclosure - 96f Capacity
Size WxHxD (mm)	485 x 44 x 350	485 x 44 x 350
Weight unit (kg)	4.2	3.8
Cassette/panel capacity	12 EHD Cassettes or Adapter Panels 3 individual sliding trays supporting 4 cassettes each	8 EHD Cassettes or Adapter Panels 2 individual sliding trays supporting 4 cassettes each
Cable entry bracket	Included cable management tie down bar - detachable	Included cable management tie down bar - detachable
Material and colour	Charcoal grey powdercoated - Rugged 1.2, 1.6 & 2.0mm steel and aluminium construction	

Standard unloaded enclosure		
Standard accessories	Each rack mount enclosure comes packaged with: 4 cage nuts, screws and washes, Velcro length, 4 cable ties, cable tie down bar & fibre management clips	

CoreLink EHD 12 Fibre MTP to LC Cassettes				
Part Number	EHD-12MTPMLCQ-M1(x)	EHD-12MTPMLCQ-M3(x)	EHD-12MTPMLCQ-M4(x)	EHD-12MTPMLCQ-S(x)
Description	CoreLink EHD MTP® Cassette: 12F Male MTP to LCQ, OM1 - Method A, B or C	CoreLink EHD MTP® Cassette: 12F Male MTP to LCQ, OM3 - Method A, B or C	CoreLink EHD MTP® Cassette: 12F Male MTP to LCQ, OM4 - Method A, B or C	CoreLink EHD MTP® Cassette: 12F Male MTP to LCQ, SM - Method A, B or C
Size WxHxD (mm)	95 x 12 x 145	95 x 12 x 145	95 x 12 x 145	95 x 12 x 145
Weight unit (kg)	0.1	0.1	0.1	0.1
Standard Cassette				



NSW - Silverwater
 Unit 4, 52 Holker Street
 Silverwater NSW 2128
 E: sales@opticalsolutions.com.au
 P: +61 2 9395 1400
 F: +61 2 9647 0014

NSW - Sydney City
 Unit 10, 10 Bradford Street
 Alexandria NSW 2015
 E: sydcity@opticalsolutions.com.au
 P: +61 2 9304 4555
 F: +61 2 9700 8055

VIC
 Unit 3 / 1 Rocklea Drive
 Port Melbourne VIC 3207
 E: vicsales@opticalsolutions.com.au
 P: +61 3 9646 4166
 F: +61 3 9646 4155

QLD
 Unit 2/ 40 Borthwick Ave
 Murarrie QLD 4172
 E: qldsals@opticalsolutions.com.au
 P: +61 7 3399 5280
 F: +61 7 3399 9805

ACT
 22 Isa Street
 Fyshwick ACT 2609
 E: actsales@opticalsolutions.com.au
 P: +61 2 6162 4600
 F: +61 2 6162 4605

WA
 28a Teddington Rd
 Burswood WA 6100
 E: wasaes@opticalsolutions.com.au
 P: +61 8 9361 7000
 F: +61 8 9361 7011