

Rittal – The System.

Faster – better – everywhere.

Gland plates for CM, TP – TS 5001.240

Date : Aug 11, 2016

ENCLOSURES

POWER DISTRIBUTION

CLIMATE CONTROL

IT INFRASTRUCTURE

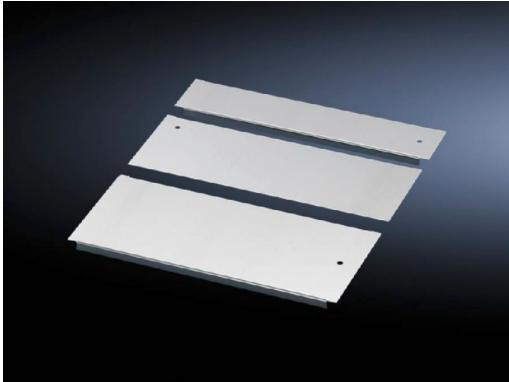
SOFTWARE & SERVICES

FRIEDHELM LOH GROUP



Gland plates for CM, TP – TS 5001.240

created: 11.08.2016 on www.rittal.com/com-en



Product description

Description:	Potential equalisation is provided via assembly components and earthing points.
Material:	Sheet steel
Surface finish:	Zinc-plated
Supply includes:	Assembly parts
Note:	For greater stability and universal cable entry, the base opening is divided in the width for 1000, 1200 and 1600 mm wide enclosures, and is suitable for various configurations. Several gland module plates need to be combined to close off the base completely in the TS-IT
Packs of:	1 pc(s).
EAN:	4028177681248
Customs tariff number:	73269098
eCl@ss 5.1:	27189240
eCl@ss 7.0:	27189261
ETIM 6.0:	EC002620

Product features

Design:	Sliding panel
----------------	---------------

To fit:	Enclosure type: TS IT Enclosure type: TS Enclosure type: CM Enclosure type: TP Width: = 800 mm
----------------	--

Dimensions:	Depth: 150 mm
--------------------	---------------

Weight/pack:	1.36 kg
---------------------	---------

Downloads

CAD drawings:	Request
----------------------	---------
